

# The Total Lite™

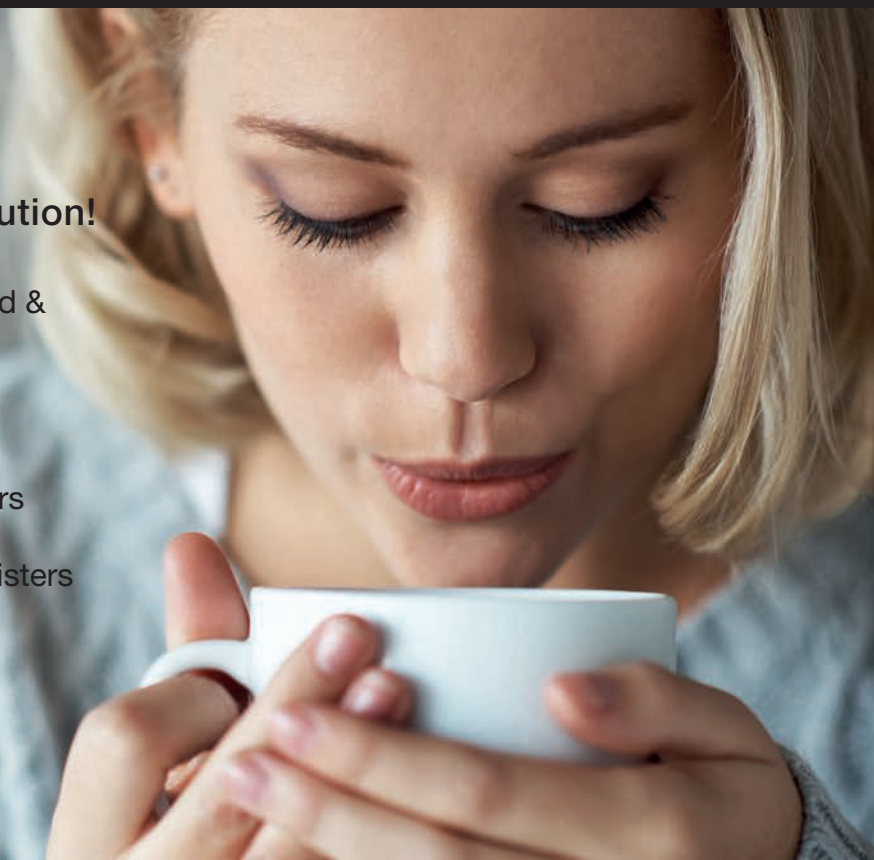
A Sleek & Compact Bean to Cup Solution!

The TOTAL LITE can be configured, managed & monitored remotely!

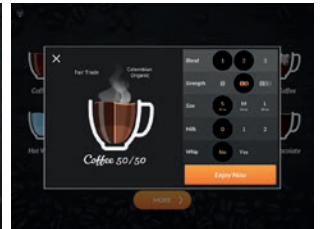
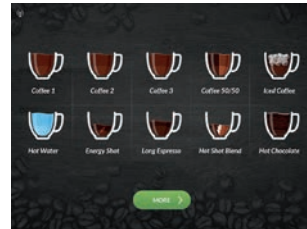
Freshly brewed coffee available 24/7

Ideal for the most demanding coffee consumers

Equipped with a 3 bean hopper, 2 soluble canisters & an interactive touch screen



\*Silver Fascia



## The TOTAL LITE Features & Advantages

- 3 cup sizes
- 3 brew strengths
- Iced coffee option (ice machine required)
- Environmentally friendly
- Programmable options: cup sizes, brew strengths and product settings
- Sleek & compact for minimum space requirement
- Selection of:

3 Whole Bean Coffees  
50/50  
Long Espresso  
Hot Chocolate

Mokaccino  
French Vanilla  
Vanilla Coffee  
Vanilla Moka

Vanilla Moka Coffee  
Hot Water for your favorite tea

## Sophia

### Global Management System

Manage your assets through our web-based application, connected to a secure and private cellular network (optional).

- Analytics
- Stats
- Videos
- Recipes
- Machine status



### The TOTAL LITE Interface

- 7" touchscreen
- Multi level screen and access levels
- An intuitive interface featuring a variety of specialty drinks
- On-screen keyboard for easy programming

### The TOTAL LITE Options

- Touchpad compliant with the Americans with Disabilities Act (ADA)
- Base cabinet
- Condiment and cup dispenser
- Extended or shorter hopper
- Vending options: coin mechanism, bill acceptor (U.S.)
- Extended base
- Drawer kit for easier maintenance



Extended base



Base Cabinets



Bill Acceptor



Extended Hopper

### Product Volume / Yield:

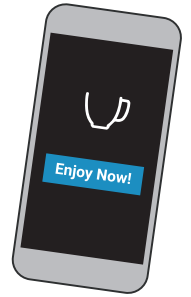
Container	Product Type	Suggested	Weight	8 oz
Hopper 1	Whole Bean	Medium Roast	4 lb	151 Cups
Hopper 2	Whole Bean	Decaf	2 lb	76 Cups
Hopper 3	Whole Bean	Dark Roast	4 lb	151 Cups
Canister 1	Soluble	Hot Chocolate	2.5 lb	36 Cups
Canister 2	Soluble	French Vanilla (default) Powder Milk	1 lb	14 Cups

**Note:** Product volume yields vary depending on gram throw (adjustable option). Above examples refer to calculation done with 1.5 g (coffee) and 3.95 g (solubles) per ounce for 8 oz cups.

## SOPHIA TOUCHLESS SOLUTIONS

Order coffee without ever touching the brewer.

SCAN. SELECT. ENJOY.



### Product Specs

Height: 40" | Depth: 23" | Width: 14" | Weight: 92 lbs  
 Minimum space requirement: Height: 50" | Depth: 26.5" | Width: 26"  
 Electrical requirements: 120 VAC, 15 A, 60 Hz  
 Filter paper: 1600 coffee capacity (approx.)  
 Water services: plumbed or bottled | Tank capacity: 0.8 gal

